

Thank you for your cooperation!

It gets very hot here in the sun, even in the winter, and this can be fatal to your pet. Please do not leave animals in your car. You may walk your dog in the parking lot, but please clean up after him or her.

On behalf of the Coachella Valley Preserve (BLM, CNLM, CDPR, CDFG & USFWS), please enjoy hiking the Coachella Valley Preserve with your family and friends, but please not with your dog.



Thousand Palms Oasis—Hub of the hiking trails on the Coachella Valley Preserve

**The Preserve is a Cooperative Conservation Effort
Managed by:**

**The Center for Natural Lands
Management**

In cooperation with

The Bureau of Land Management

**California Department of
Fish and Game**

**California Department of Parks
And Recreation**

&

**The US Fish and Wildlife
Refuge System**

CNLM
P.O. Box 188
Thousand Palms, CA
92276

Phone: 760-343-1234

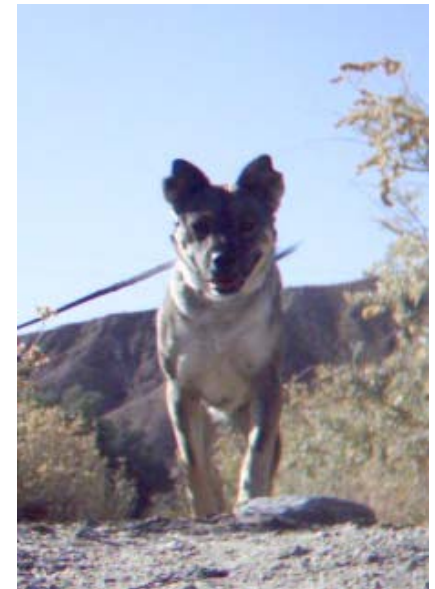
Fax: 760-343-0393

E-mail: gshort@cnlm.org



**Rise Early. Stay Late
and Take Care of the
Land.**

Protect Wildlife & Protect Your Pet



The Preserve is a Cooperative Conservation Effort
Managed by:
The Center for Natural Lands Management
In cooperation with:
The Bureau of Land Management
California Department of
Fish and Game
California Department of Parks
And Recreation
The US Fish and Wildlife
Refuge System

760-343-1234

Why no dogs?

Man's best friend is often "your" best friend, and he has been faithfully performing that role for more than 10,000



Lizards are favorite critters for dogs to chase. The lizards on the Preserve are protected

years. However, he is not the best friend of the wildlife in the Preserve.

Your companion, large or small, is still a predator at heart, and though he may be well behaved at home or when on a leash, his natural hunting instincts will be elevated in the wilderness.

Dogs, like their cousins, the wolf, coyote and fox, exert pressure on prey animals by acting aggressively and marking their territory with scent. This type of behavior causes additional stress in the prey animals that must now expend precious energy preparing a defensive action. Because scent remains for a very

long time, the stress on prey animals continues long after your pet has gone.

Even though your dog is in good health and has had all his shots, it is still possible for him to be a carrier of certain diseases. Wild animals are highly susceptible to these diseases. Exposure to such diseases, unnecessary stress and an additional expenditure of energy can contribute to an early death for the preserve animals.

Because of this very natural animal instinct and activity, dogs are not allowed anywhere on the Preserve. We hope, by explaining why the policy exists, it will help you understand the reasons we must ask for your compliance.



Rabbits and other prey animals can be stressed by the presence of predators. These animals don't know your dog is a pet.

Where can you walk your dog?

There are several dog friendly trails in the surrounding cities:

City of La Quinta: Cove Oasis Trailhead

From Highway 111 in La Quinta, travel 1.3 miles south on Washington Street. Turn right on Eisenhower Drive and proceed for 3.7 miles until it intersects Avenida Bermudas. Turn right. At 0.2 mile the road bends to the right and becomes Calle Tecate. The parking lot is 0.2 mile further on the left. Dogs are not allowed on the following trails that extend south and east from the Cove Oasis Trailhead area: Bear Creek Canyon Trail, Bear Creek Oasis Trail, and La Quinta Cove to Lake Cahuilla Trail.

City of Palm Desert: Homme-Adams Park and Cahuilla Hills Park

From Highway 111, travel 1.2 miles south on Highway 74. Turn right on Thrush Road, then travel 0.2 mile and cross the storm channel. Turn right and proceed to the trailhead parking area. Hiking with dogs is allowed only on the trails that connect Homme-Adams Park and Cahuilla Hills Park. Dogs are prohibited on trails that extend further to the north and south. While on City lands at the lower trail elevations, dogs must be under voice control. On BLM lands at the upper elevations of this trail network, dogs must be on leash.

For additional information on these trails:

Santa Rosa and San Jacinto
Mountains National Monument
Visitor Center
51-500 Highway 74 in Palm Desert
Telephone (760) 862-9984